



República de Angola

Instituto Nacional de Meteorologia e Geofísica

SWFDP - PWS

Pretoria, 2013

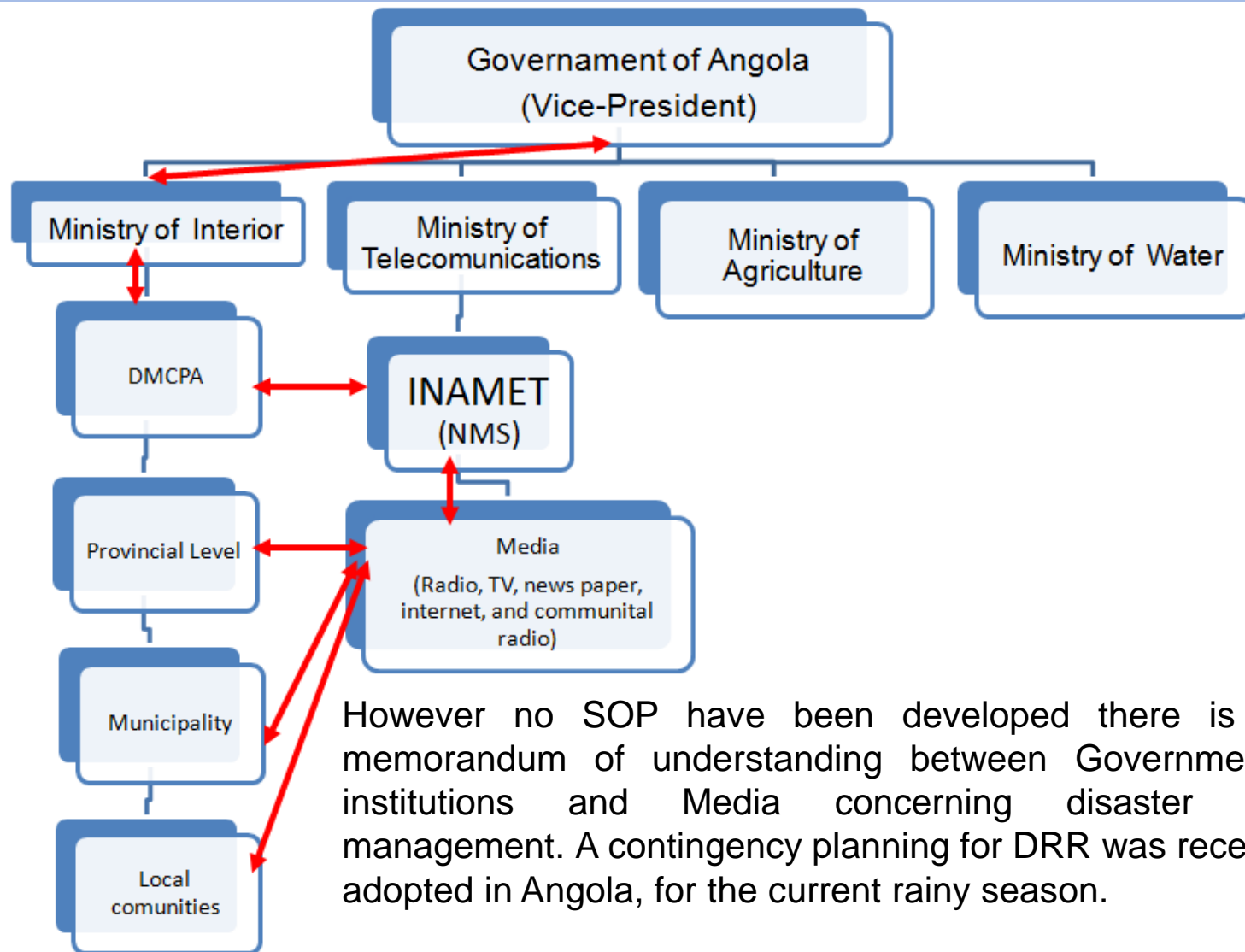
Public Weather Service Deliver for Disaster Risk Reduction

The extensive use of global and regional NWP products available at the RSMC - Pretoria web portal is improving the forecasters skills and confidence on predicting severe weather events, by forecaster at NMS – Angola (INAMET).

INAMET is working towards the enhancement of the dissemination mechanisms through collaboration with different stakeholders, regularly meetings and outreach activities (visit and exhibitions).

Although there is not yet been established an formal Early warning System in Angola, there is a legal framework that governs the authority and responsibility of INAMET as the sole organization in the country with the authority to issue alert/warnings which are disseminated to the DMCPA, Media and general public, reaching immediately the communities at risk through the different DMCPA from national, provincial to local level.

ALERT / WARNING FLOW CHART



However no SOP have been developed there is an memorandum of understanding between Governmental institutions and Media concerning disaster risk management. A contingency planning for DRR was recently adopted in Angola, for the current rainy season.

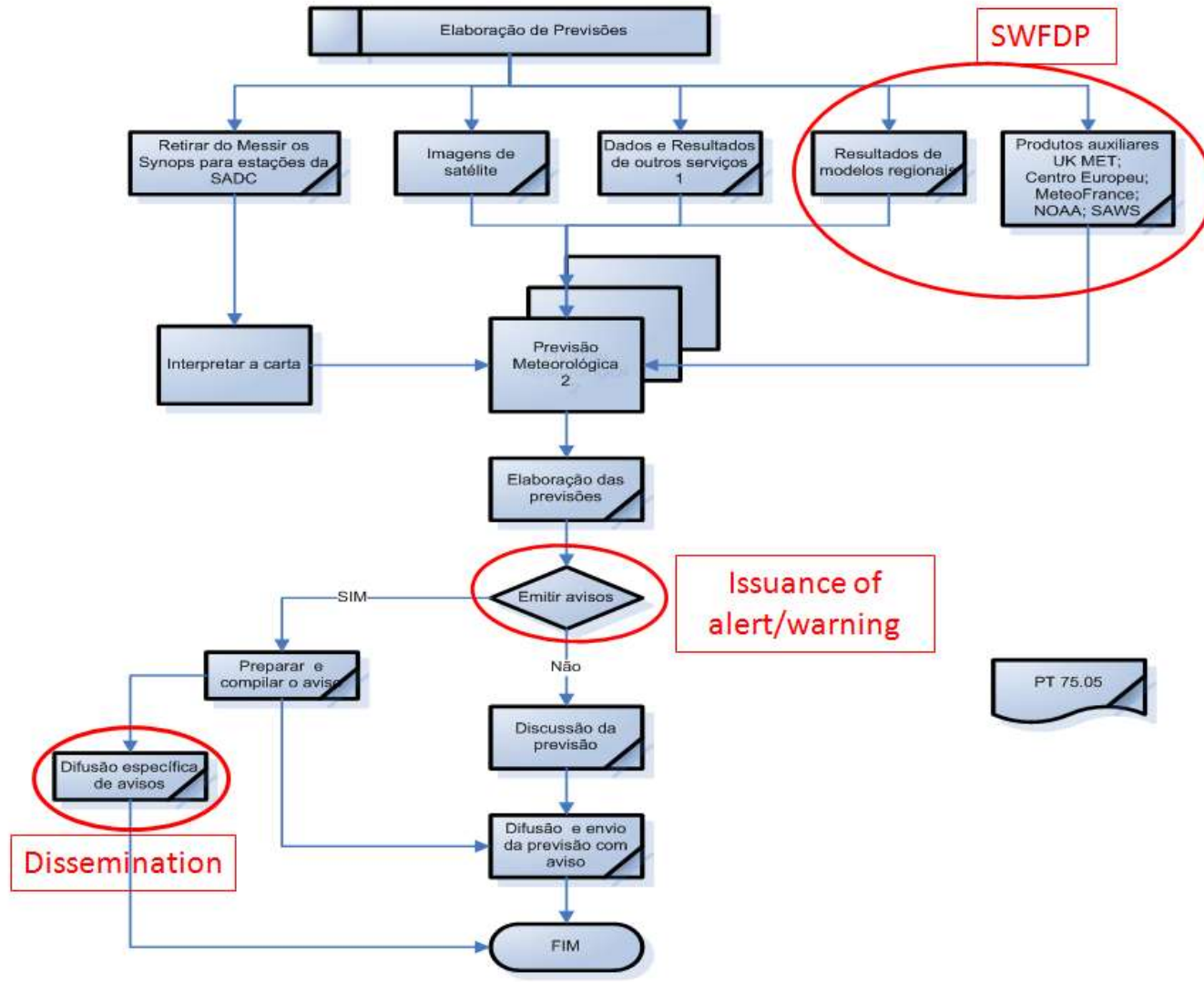
Best practices and challenges on the arrangements for DRM

The nomination of an dedicated focal point from INAMET to collaborate with DMCPA before, during and after severe weather hazard throughout the rainy season, and direct collaboration between the duty forecasters and Media/DMCPA demonstrated to be crucial for dissemination of information (April 05 heavy rainfall example).

This collaboration allowed the different stakeholders to understand the uncertainty in the meteorological information. But there is a lot to be done in this field.

One of the challenge faced by INAMET in the dissemination process is the absence of a formal Early warning System in Angola and lack of staff in order to collaborate with DMCPA at different levels (from national to provincial or local level)

FORECAST AND ALERT/WARNING PRODUCTION



There is an action plan on the Strategic Development Plan (recently adopted by the Government) which will boost the production and delivery system at INAMET.

FORECAST AND ALERT/WARNING PRODUCTION, Cont'd

Table 1: Shift-Work System at INAMET forecasting center

	Working Time (local time in Angola)			Number of Forecaster on Duty (Meteorologist)	Number of Met. Technician on Duty
Shift 1	07:00	-	19:00	01	01
Shift 2	19:00	-	07:00	01	01
Emergency (*)		-		02 or 03**	01

*In case of severe weather or emergency situation

**Depending on availability of Forecasters

Table 2: Meteorological Product Delivery

Meteorological Product	Product Name or specification	Type of Users	Delivery Method
			1. Web Page 2. E-mail 3. Fax 4. Hand Delivery 5. Voice (a live or phone). 6. FTP
Forecast	Daily weather bulletin	General public	1, 2, 4 and 5
	Short range (3 days)	INAMET/Agriculture web portal	1 and 5
	Weather TV graphics	National TV station (TPA)	6, 4 and 2
Information/ Advisory/ Warning	Severe Thunderstorms	General public through the media, DMCPA and different stakeholders	1, 2, 3, 4, 5 and 6
	Heavy rainfall		
	Strong winds	DMCPA	5, 2, 3 and 1

MEDIA AND GENERAL PUBLIC: collaboration and feed back

The collaboration with the Media, in general, can be considered to be at a good stage in Angola. This allows INAMET to reach the general public.

Although the meteorological information on TV and RADIO are not presented on a daily basis by meteorologists, the forecasters and the DRM focal point are always available for live or recorded interviews and explanation on Radio, TV and all mass media.

The TV weather presenters belong to the TV station but were trained by INAMET. Whenever there is a warning it is highlighted during the TV show.

No formal feedback are received from the media and general public but dedicated surveys ([under discussion](#)) will be used during the current rainy season.

INAMET Web site: Launched on October 16, 2013

<http://www.inamet.gov.ao/home.php>

The screenshot displays the INAMET website interface. At the top, a green navigation bar contains links: "O Instituto", "Missão e Visão", "Localização Estações Provinciais", "Mapa do site", "Notícias", and "Contato". Below this, a dark grey header features the INAMET logo, a weather forecast for Luanda (21°C/28°C - Céu pouco nublado ou limpo), and icons for "Chuvas 23/08" and "Nova 21/02". A search bar is also present.

A secondary navigation bar includes: "Tempo", "Avisos e Alertas" (highlighted with a red box), "Clima", "Observações meteorológicas", "Meteo. Marítima", "Agrometeorologia", "Meteo. Aeronáutica", "Geofísica", and "Programas/Projetos".

The main content area is divided into three columns:

- Left Column:** A preview of the website's mobile application interface, showing a map of Angola and weather data. Below it, a news snippet dated 19/09/2013 states: "Novo site do Inamet será lançado oficialmente amanhã" (New INAMET site to be officially launched tomorrow).
- Middle Column:** A map of Angola with weather icons (suns and clouds) placed over various regions.
- Right Column:** A detailed weather forecast for Luanda on 21/09/2013. It shows a high of 21°C and a low of 28°C, with 0mm of precipitation and a description of "Céu pouco nublado ou limpo". A link for ">>Veja previsão completa" is provided.

Below the main content, there are three sections:

- Previsão por região:** A section titled "Norte" (North) with a description: "Céu pouco a parcialmente nublado pela tarde e noite, apresentando-se muito nublado pela madrugada e manhã. Possibilidades de ocorrência de neblina matinal nas p..." and a link ">> Ver previsão completa".
- Descrição da situação sinóptica:** A section with tabs for "Satélite", "Prec", "Min.", and "Max.", showing a satellite image of the region.
- Previsão sazonal:** A section titled "PREVISÃO MAM 2013" (Seasonal Forecast MAM 2013) with a map of Angola and a "Download PDF" link.

The P.R. of Angola with WMO, expressed the desire of seeing the INAMET web-portal Connected to the SWFDP products.



THANK YOU

Guido Teca
&
Sérgio Buque